

# New York State Police TrueAllele® Validation

New York State DNA Subcommittee  
Russell Gettig, PhD  
May, 2011



---

---

---

---

---

---

---

---

## Property Crime Study

- Materials
- 25 property crime cases
  - 91 evidence items
  - nonsuspect reference comparison
- Match information results
- human: 6 CMPs reported
  - computer: 33 LR's reported

---

---

---

---

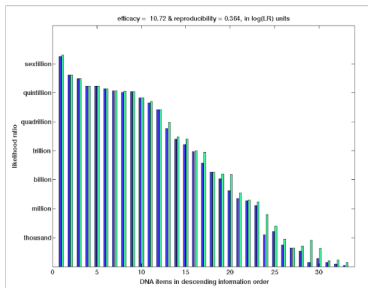
---

---

---

---

## Efficacy and Reproducibility



---

---

---

---

---

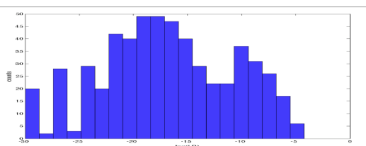
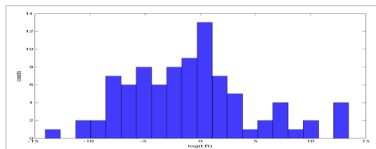
---

---

---

## Sensitivity and Specificity

Within-case sensitivity



Between-case specificity

---

---

---

---

---

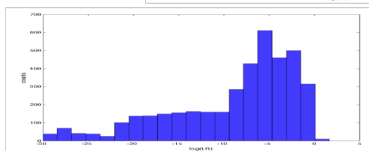
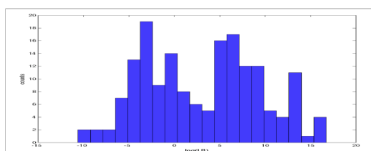
---

---

---

## Evidence-to-evidence

Within-case sensitivity



Between-case specificity

---

---

---

---

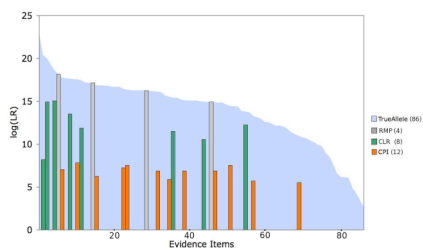
---

---

---

---

## Preserving Identification Information




---

---

---

---

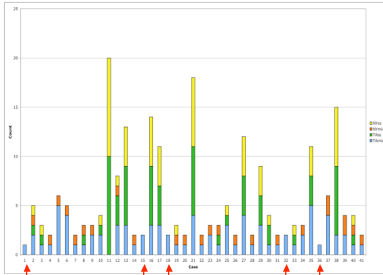
---

---

---

---

## Solving Unsolved Cases




---

---

---

---

---

---

---

---

## Complex Case

- 30 evidence items
- 6 known references
- genotype: 36 items
- compare: 180 pairs

---

---

---

---

---

---

---

---

Item	1F1	1G1	1H1	1I1	1J1	1K1
1A2	14.65					
1B1	14.65					
1E3	14.65					
1E5	14.64					
1E6				9.11		
1E7				4.11		
1H-1	6.55					
1J-L						
2A1A	14.65					
2E1A	14.65					
2E1C	14.65					
2E1F	14.65					
2E1H						
2E2A	14.65					
2E2B	14.65					
2E2C			12.40			
2E2D			6.98			
2E2E						
2F-H						
2I-J						
2K	14.65					
2L-N						
2O						
3D-E						
3F-H						
3I-K						
3L-N						
4D						
4E						
4F						

---

---

---

---

---

---

---

---



## Genotype Report

locus	allele 1	allele 2	probability
AMELO	1	1	1
CSF1PO	10	11	0.95
D13S317	9	13	0.99
D16S539	12	12	1
D18S51	12	18	0.96
D19S433	11	13	0.99
D21S11	30	31.2	0.95
D2S1338	30	30	0.05
	21	24	0.9
D3S1358	17	24	0.07
D5S818	17	18	0.98
D7S820	12	15	1
	9	11	0.92
D8S1179	8	9	0.05
	11	13	0.99
FGA	20.2	23	0.89
	20	23	0.04
	23	23	0.01
	21	23	0.01
TH01	7	9	0.99
TPOX	8	11	0.99
vWA	14	19	1

Probabilistic genotype: SWGDAM 3.2.2, ANSI/NIST 18.020

## Match Report

log(LR)	US_BLK_FBI	US_CAU_FBI	US_HIS_FBI
CSF1PO	0.92	0.78	0.84
D13S317	2	1.7	1.19
D16S539	1.37	0.9	1.04
D18S51	1.72	1.54	1.82
D19S433	1.34	2.25	2.35
D21S11	1.49	1.28	1.18
D2S1338	1.49	2.06	2.41
D3S1358	1.57	1.13	1.6
D5S818	2.15	2.06	2.14
D7S820	1.1	1.17	1.46
D8S1179	1.68	1.32	1.33
FGA	2.44	2.27	2.31
TH01	0.87	1.21	1.12
TPOX	0.77	0.55	0.51
vWA	1.92	1.7	1.95
<b>Total</b>	<b>22.84</b>	<b>21.92</b>	<b>23.27</b>

A joint log(LR) value of 21.92 is 8.32 sextillion

## Conclusions

TrueAllele interpretation of DNA evidence

- information preserving
- reproducible
- sensitive
- specific
- solves unsolved cases
- simplifies complex cases
- easy to use
- easy to report